

ELIE HOUSE

APARTMENT 7

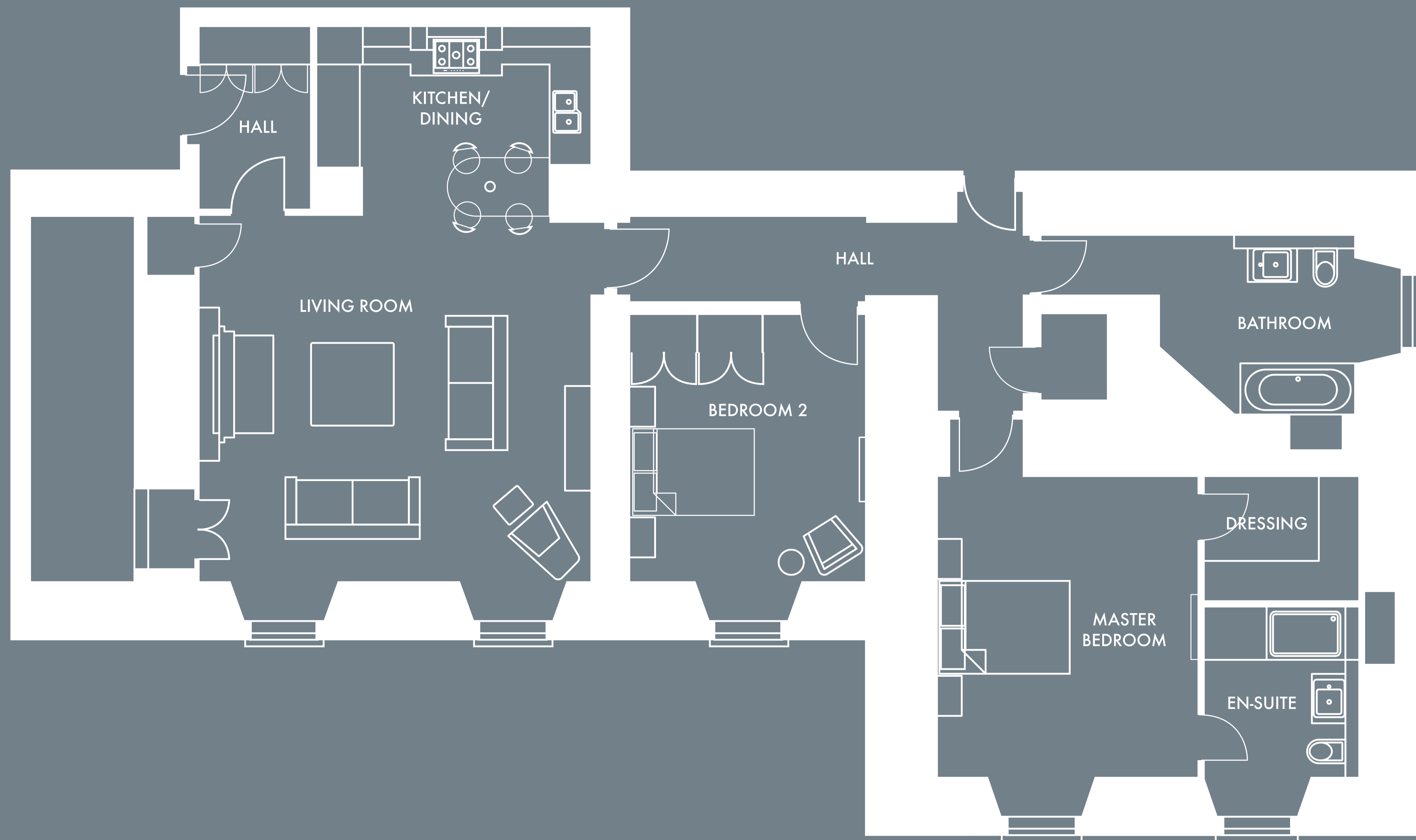


TWO BEDROOM MANSION HOUSE APARTMENT

Apartment 7 is the last remaining Chris Stewart Group converted apartment available within the main house. With a first floor location and accessed from the grand staircase, Apartment Seven enjoys easterly views over the extensive grounds and benefits from under floor heating throughout. This unique two bedroom, two bathroom apartment combines the living space to create a fantastic kitchen, living and dining area. An open fireplace with gas fire provides a focal point for a living room that retains its original plaster cornice work. The bespoke kitchen includes integrated Siemens appliances; gas hob, oven and combination microwave, dishwasher, fridge freezer and washing machine. The bathrooms benefit from Laufen white bathroom suites and Porcelanosa tiles. The Master Bedroom also benefits from a Dressing Room as well as the En-suite shower room.

ELIE HOUSE

APARTMENT 7



TWO BEDROOM MANSION HOUSE APARTMENT

| | | | |
|----------------|----------------|--------------|----------|
| Living/Dining | 19'8" x 18'4" | 6.00 x 5.60m | 35.4 sqm |
| Kitchen/Dining | 13'9" x 9'6" | 4.20 x 2.90m | 11.1 sqm |
| Master Bedroom | 15'1" x 13'1" | 4.60 x 4.00m | 20.2 sqm |
| Ensuite | 8'6" x 7'8" | 2.60 x 2.35m | 6.9 sqm |
| Dressing Room | 7'8" x 6'2" | 2.35 x 1.89m | 4.4 sqm |
| Bedroom 2 | 13'5" x 11'10" | 4.10 x 3.60m | 15.6 sqm |
| Bathroom | 15'1" x 9'3" | 4.60 x 2.82m | 10.8 sqm |
| Hall | 9'2" x 6'2" | 2.79 x 1.88m | 4.9 sqm |